

# MEDICAL ASSISTANT CERTIFICATE PROGRAM



## PREPARE FOR A REWARDING CAREER AS A MEDICAL ASSISTANT

Imagine training under the supervision of a physician or medical practitioner, learning how to take vital signs, record EKGs, assist in minor surgical procedures, perform basic medical accounting, and understand the fundamentals of charting and documentation. If you're interested in pursuing opportunities in the rewarding field of patient care, Purdue University Global's Medical Assistant Certificate program can help you gain the relevant experience and skills to become a qualified candidate.<sup>1</sup>

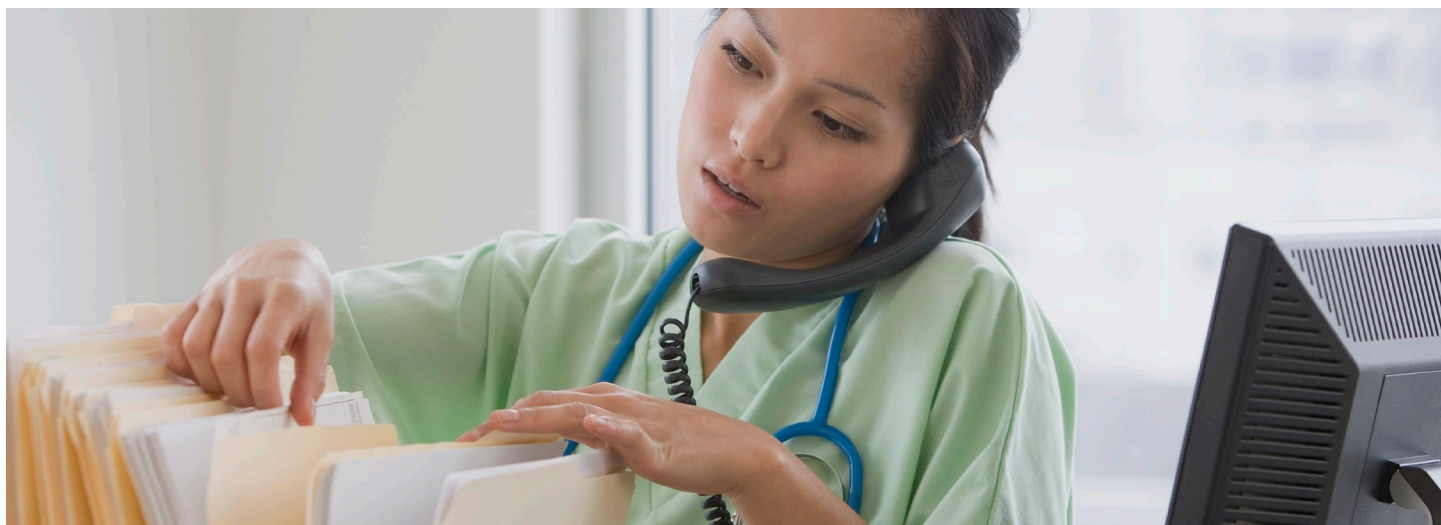


Salina Regional  
Health Center



PURDUE GLOBAL  
UNIVERSITY

## CAPITALIZE ON EDUCATION BENEFITS FROM PURDUE UNIVERSITY GLOBAL



### THROUGH SALINA REGIONAL'S PREFERRED EDUCATIONAL PARTNERSHIP WITH PURDUE GLOBAL, EMPLOYEES ARE ELIGIBLE TO PARTICIPATE IN THE MEDICAL ASSISTANT PROGRAM.

The Medical Assistant program provides a customized education solution to enhance employee skill levels while magnifying positive impact. Employees/students will be working full-time in the clinic setting while completing this 8-month, online accelerated program. There is a three-year time of service work commitment with acceptance into the Medical Assistant program. Below is a list of courses that students will take each term:

TERM I (10 WEEKS)	TERM II (10 WEEKS)	TERM III (10 WEEKS)
MA250 Professionalism in Health Care	SC131 Human Anatomy and Physiology II	HS200 Diseases of the Human Body
SC121 Human Anatomy and Physiology I	HS101 Medical Law and Bioethics	HS220 Medical Coding and Insurance
HS111 Medical Terminology	HS140 Pharmacology	MA295 Medical Assisting Externship (160 clinical hours)
MA265 Clinical Competencies I	HS210 Medical Office Management	
MA275 Clinical Competencies II	MA280 Clinical Competencies III (50 Clinical Hours)	

For more information on eligibility and your application, contact Human Resources at [hr@srhc.com](mailto:hr@srhc.com) or call 785-452-7142.

# WHY STUDY AT PURDUE GLOBAL'S SCHOOL OF HEALTH SCIENCES?

## FLEXIBILITY FOR WORKING ADULTS

The program blends online coursework with on-ground clinical experiences. You can also visit one of our regional locations to take advantage of local, onsite support and services.

## TRANSFER CREDITS

Use credits you earned at another institution to graduate sooner.<sup>2</sup>

## REAL-WORLD LEARNING

Gain valuable on-the-job experience through the program's clinical component and an externship completed at a health care facility. In addition, the program offers hands-on, industry-related medical equipment training.

## FACULTY EXPERTISE

Learn from experienced health care professionals currently active in the field. All of our professors possess advanced academic degrees.

## PERSONALIZED SUPPORT

Work directly with faculty through online discussion boards and seminars, and enjoy no-cost individual tutoring. In addition, academic and career advisors are dedicated to helping you balance school with your career and life responsibilities.

## INTRODUCTORY TRIAL PERIOD

Make sure online learning at Purdue Global is right for you. Enroll in the University and try our classes for 3 weeks before you owe any tuition. That's the Purdue Global Commitment.<sup>3</sup>

# TAKE THE NEXT STEP IN YOUR EDUCATION AND CAREER

## PREPARE FOR CERTIFICATIONS

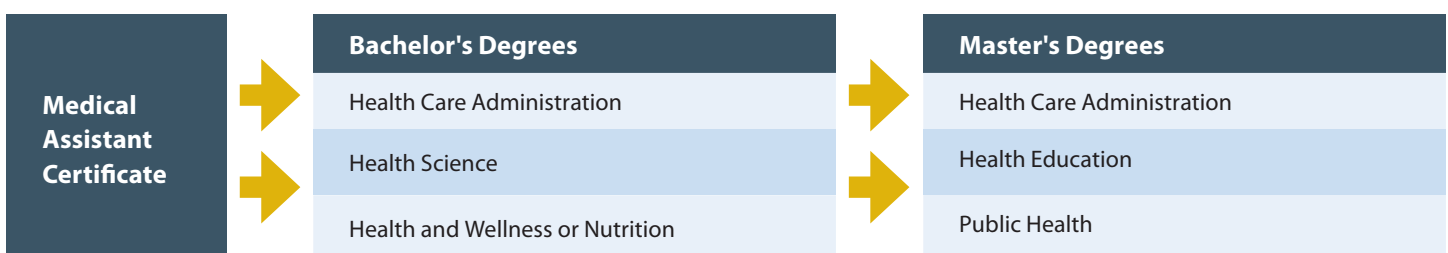
Keep building your credentials—the program prepares you for the following<sup>4</sup>:

Certification Exam	Given By
Registered Medical Assistant (RMA)	American Medical Technologists (AMT)
National Certified Medical Assistant (NCMA)	National Center for Competency Testing (NCCT)
Certified Clinical Medical Assistant (CCMA)	National Healthcareer Association (NHA)
Clinical Medical Assistant Certification (CMAC)	American Medical Certification Association (AMCA)

Graduates who complete the program at our Des Moines, Iowa, location may also be eligible to take the Certified Medical Assistant (CMA) examination given by the American Association of Medical Assistants (AAMA).

## CREATE A PATHWAY TO YOUR BACHELOR'S OR MASTER'S DEGREE

Use qualified credits earned in fulfillment of your certificate toward the requirements of certain Purdue Global degree programs.<sup>5</sup>



## ABOUT PURDUE GLOBAL

Building on Purdue's mission to provide greater access to affordable, world-class education, Purdue University Global delivers a fully personalized online experience that's tailored for working adults.

### NATIONALLY RANKED AND RESPECTED

By opening the doors to adults who need flexibility to fit learning into their busy lives, we make it possible to achieve a high-quality education from a respected university system. Purdue Global is part of the Purdue University system, one of the most prestigious research universities in the world. Purdue University is ranked in the top 10 best public universities in the U.S. by *The Wall Street Journal/Times Higher Education*.<sup>6</sup>

### ACCREDITATION

Purdue University Global is accredited by The Higher Learning Commission (HLC). For more information, visit their website at [HLCcommission.org](http://HLCcommission.org). Use the links under "Contact Us" to reach the Commission.

## ABOUT SALINA REGIONAL HEALTH CENTER

Salina Regional Health Center is a community-owned, not-for-profit, 373-bed hospital located in north central Kansas. The hospital is a full-service acute care facility and Level III Trauma Center where physicians practice old-fashioned compassion, complemented with the latest technologies to make healing happen even faster. Salina Regional's commitment to excellence makes a difference in people's lives so patients can have the confidence that comes from getting better and stronger every day.

### GOOD LIFE, GREAT CAREERS

Salina Regional's most valuable resource is their staff. Each individual plays a critical role in contributing to patient care. They know that north central Kansans seek, and demand, the highest standards in health care. Salina Regional Health Center is the region's health care leader, armed with the latest medical technology, expertly guided by capable physicians, and made human by caring, attentive, and friendly nurses, staff, and employees.

### A GREAT PLACE TO CALL HOME

Salina is a regional hub for much of the 13-county area, serving a population of about 160,000. This not only makes Salina north central Kansas' center for state-of-the-art medical services, but also for retail trade and entertainment. A diverse economy and strong work ethic allow Salina to continually rank among Kansas' best in such areas as cost of living, regional trade pull, unemployment, and personal income.

#### IMPORTANT INFORMATION: PLEASE READ

For comprehensive consumer information, visit [Info.PurdueGlobal.edu](http://Info.PurdueGlobal.edu).

<sup>1</sup> Purdue Global cannot guarantee employment or career advancement. Additional training or certification may be required. In addition, job titles and responsibilities may vary from organization to organization.

<sup>2</sup> Purdue Global does not guarantee transferability of credit. Future transfer credit savings are subject to review and the academic policies of Purdue Global. See the University Catalog for the Prior Learning Assessment policy.

<sup>3</sup> Classes count toward a degree if satisfactorily completed. No credits are earned if the student withdraws during the introductory period (3 weeks for new qualifying undergraduate students), which begins day one of the first term. Students who choose to continue their studies at Purdue Global will need to meet specific requirements. Graduate programs not included. Additional terms may apply to international and non-U.S. citizen students. For further information, see the University Catalog. Application fee waived for educational alliance employees.

<sup>4</sup> Certification and licensing boards in Washington and South Dakota have specific educational requirements for a program to lead to certification as a medical assistant, which is a precondition for employment in those states. This program meets the educational requirements to obtain certification in Washington and South Dakota. Refer to the University Catalog for additional information. Residents of all states are responsible for understanding the requirements of optional certification exams. The University cannot guarantee students will be eligible to sit for or pass exams. In some cases, work experience, additional coursework beyond the Purdue Global program, fieldwork, and/or background checks may be necessary to be eligible to take or to successfully pass the exams.

<sup>5</sup> Speak to an Advisor about admissions requirements and transfer credit opportunities and see the University Catalog for the Prior Learning Assessment policy.

<sup>6</sup> Source: [www.timeshighereducation.com/student/best-universities/best-public-universities-united-states](http://www.timeshighereducation.com/student/best-universities/best-public-universities-united-states). Rankings apply to Purdue University West Lafayette and not to Purdue Global.